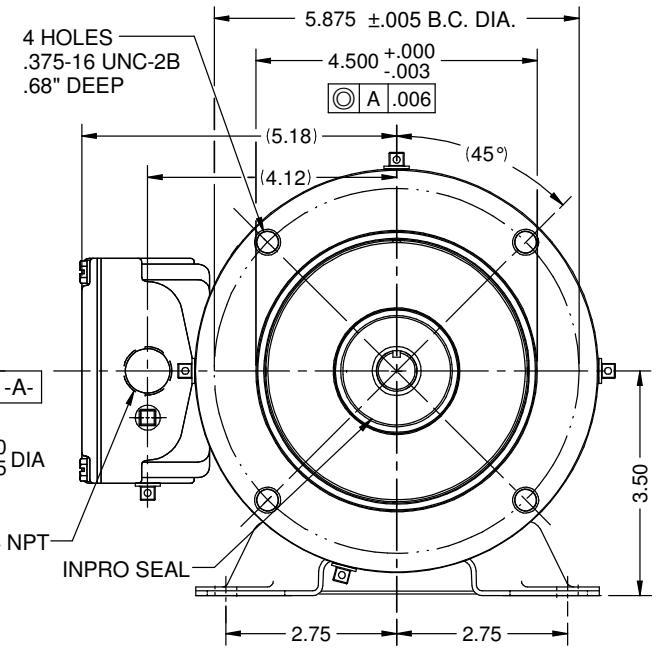
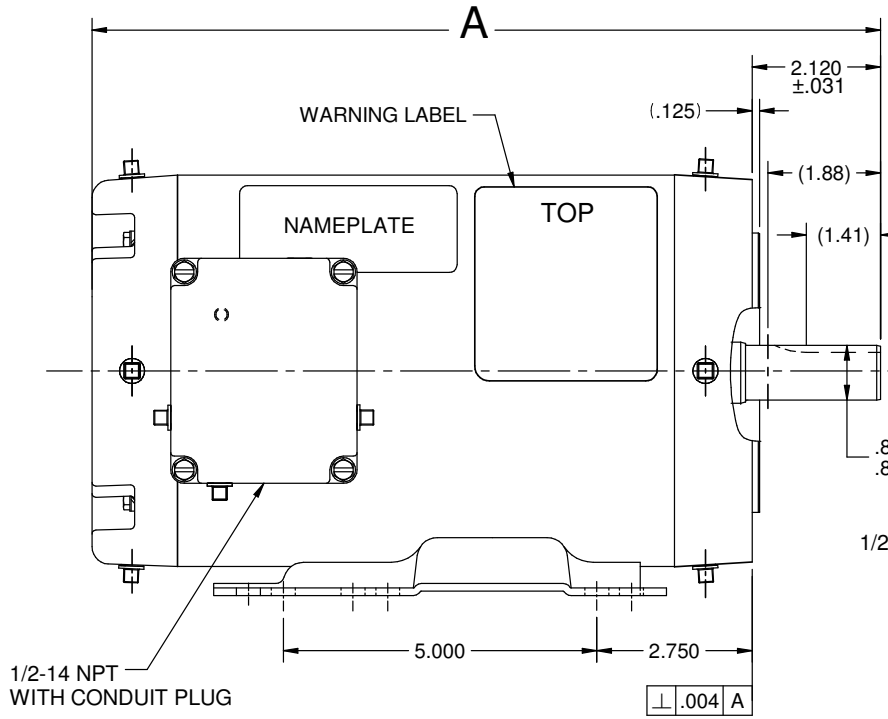
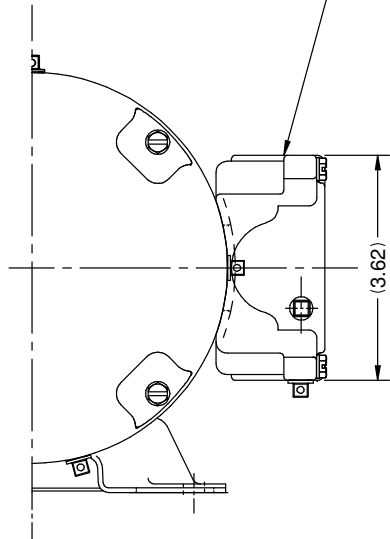


VAR	MODEL	CUSTOMER	CATALOG NO.	A	B	C	D	HP	VOLTS	SF	AMPS	HZ	RPM	PROTECTOR	BASE REQUIREMENT	DESCRIPTION / REMARKS
001	P63FRJ-1473	USEM	WDP1P2AC	14.31	-----	-----	-----	1.0	208-230/460&190/380	1.15	3.5-3.4/1.7	60&50	1725&1425	NONE	YES	N145TC, TENV, STAINLESS STEEL SHELL
002	P63TLF-1478	USEM	WDP3P2AC	14.31				1.5	208-230/460&190/380	1.0	4.0 4.8/2.4	60&50	1725&1425	NONE	NONE	N145TC, TENV, STAINLESS STEEL SHELL

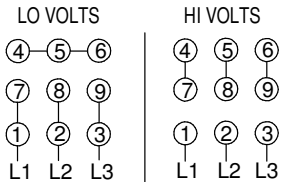
REV D

REV D

GASKETS UNDER CONDUIT BOX AND CONDUIT BOX COVER



CONNECTIONS



TO REVERSE ROTATION INTERCHANGE ANY TWO LINE LEADS.

NOTES:

- (11) 1/4-18 PLASTIC DRAIN PLUGS; (4) IN C-FACE, (4) IN OPPOSITE SHAFT END ENDSHIELD AND (3) IN CONDUIT BOX.
- 303 STAINLESS STEEL SHAFT KEY SHIPPED WITH MOTOR.

NIDEC MOTOR CORPORATION 26-Oct-17

REFER TO S.E.I.M. 24-1

REVISION RECORD FOR:

ECO E29860

UPDATED IN THE FIELD "BASE REQUIREMENT" FROM NONE TO "YES" FOR VAR 001 IN THE CHART AND OBSOLETE VAR 002 & IT WAS REPLACED FOR V028181010001 DRAWING IN THE PAGES 1 & 2.

DIMENSIONS ARE FOR REFERENCE ONLY

UNLESS TOLERANCE IS SPECIFIED

NIDEC MOTOR CORPORATION

INFORMATION DISCLOSED ON THIS DOCUMENT IS CONSIDERED PROPRIETARY AND SHALL NOT BE REPRODUCED OR DISCLOSED WITHOUT WRITTEN CONSENT OF NIDEC MOTOR CORPORATION

REVISION DATE: 26-OCT-17

ISSUED BY: G. MEDINA

ENGINEER APPROVED: M. SCHUETTE

TITLE: CUSTOMER DETAIL DRAWING

CODE: V02 ITEM NO.: 810417

REV: D SHEET NUMBER: 1 OF 5 DWG SIZE: B